



TOMRA T9 with **EasyPac**

Make it a perfect fit
for your store



Create an easy customer experience

Ensure speedy returns of one-way containers, refillables and entire crates even during high-volume times with the T9's industry-leading TOMRA Flow and True Vision recognition technologies.



Make it work in any space

Configure the T9 EasyPac to fit your backroom's layout for maximum space efficiency that matches your store's volume, whether you need one cabinet or five.

Endless customization for optimized operation

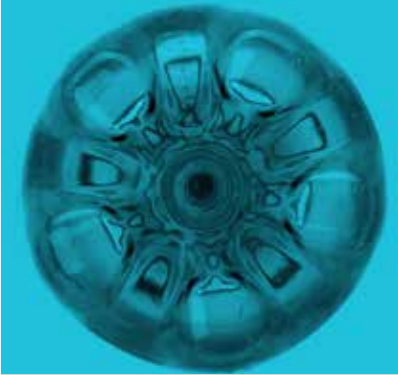
We tailor your T9 EasyPac to fit your store's unique needs, from the right mix of recyclables and backroom configuration to the T9 exterior and customer interface. We can update your reverse vending system at any time so your investment serves you well over the long term, even as your needs evolve.

Streamlined maintenance means more uptime and less staff time

Re-routing keeps your T9 EasyPac running even while staff empty a full bin, and smart product design combined with intuitive operator interfaces make cleaning a simple task.

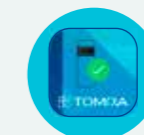


TOMRA T9 with EasyPac



Fully connected for a smarter experience

Make your T9 EasyPac more powerful without using another inch of space, by using TOMRA's digital tools to engage customers, drive sales and run your RVMs more efficiently.



Notify+Assist



myTOMRA



Voucher Control



Promotion



Weekly Reports



API Integration

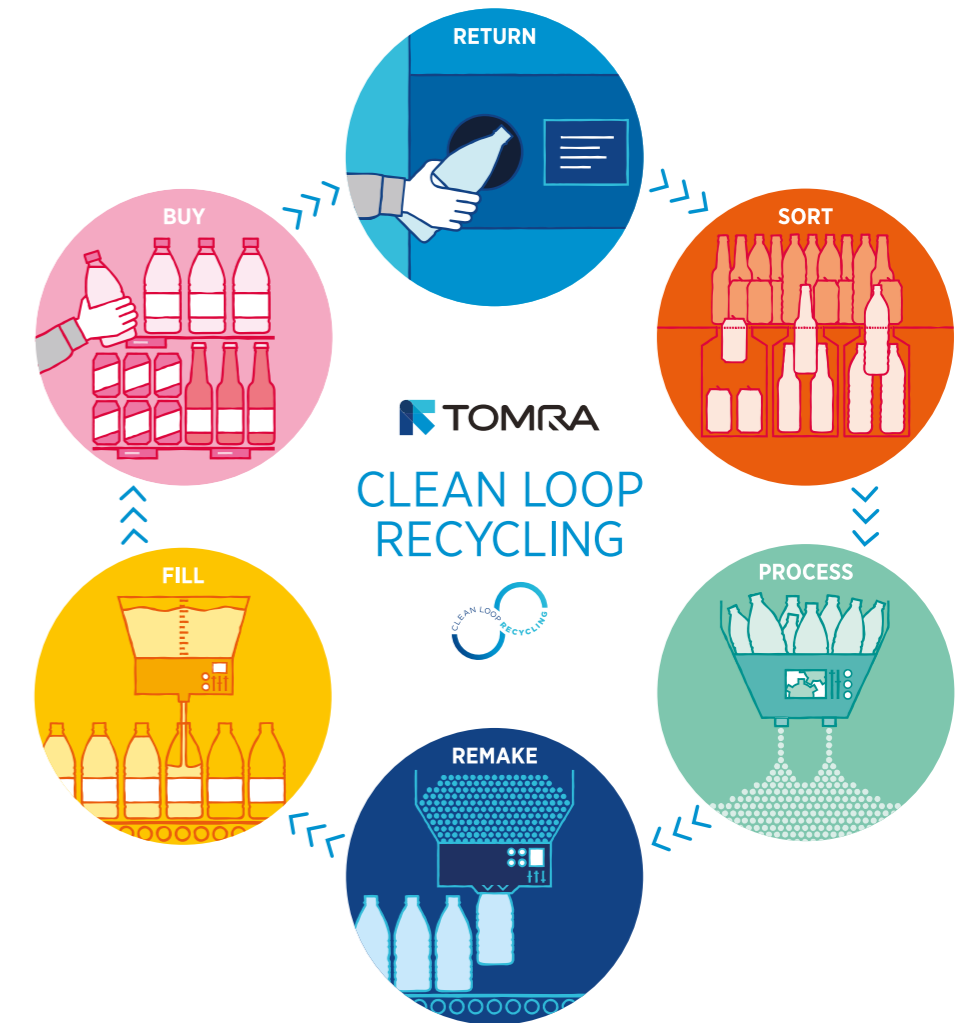
LET'S PUT RECYCLING TO WORK FOR YOU

TOMRA's vision is Leading the Resource Revolution, helping to manage our planet's precious resources, today and tomorrow.

We believe that Clean Loop Recycling is the simple solution for keeping used beverage containers out of the waste stream, moving valuable materials from single use to multiple use.

As a retailer, you're at the heart of Clean Loop Recycling. You play a critical role at the point where consumers buy and return their containers.

Let's put recycling to work for you, and together we can maximize the positive impact for your customers, for your business, and for the planet.



When you partner with TOMRA, your business can experience real benefits:

A great recycling experience for your customers

Be prepared for your customers when they're ready to recycle with tailored solutions, industry-leading technology and powerful digital tools that make their experience efficient, easy and engaging.

Efficient operations for peace of mind

Keep your store running smoothly with a reverse vending system that's accurate, secure and efficient and service that's responsive and ready to get you back to recycling anytime you could use a hand.

A smart investment for long-term benefits

Choose a full-service partner with a global scale, extensive experience, high quality and continuous improvements that will keep your reverse vending system working hard for your business for years to come.



TOMRA T9 with EasyPac

Dimensions	1150 mm x 4800 mm x 1800-1940 mm [W x D x H] ¹
Footprint	5.5 m ² (rectangular footprint) ¹
Accepted containers	Cans, plastic bottles, glass bottles and crates ²
Storage capacity per bin ³	<p>PET bottles: Up to 1500 (compacted)</p> <p>Cans: Up to 6000 (compacted)</p> <p>50/50 mixed PET bottles/cans: 2000 (compacted using mix crusher)</p> <p>Glass bottles: Up to 400 ⁴</p>
Configurations	<p>Cabinets: 1-5 cabinets, several types available</p> <p>Destinations: 1 or 2 per cabinet</p> <p>Orientations: Angled right/left or straight, built to fit any backroom</p> <p>Cabinet config.: PET crusher / Can crusher / Mix crusher / Glass crusher / Drop</p> <p>End-of-lane kits: End default / SoftDrop / Table with raiser / RearDrop</p>
Recognition technology	<p>TOMRA Flow</p> <p>TOMRA True Vision ²</p>
Speed capability ⁵	<p>Up to 60 containers per minute</p> <p>Up to 21 crates per minute ²</p>
Electrical – Mains EU	<p>EasyPac: 400 V AC, 3-phase w/ground, 50 Hz, 16 A</p> <p>TOMRA T9: 230 V AC, 1-phase w/ground, 50 Hz, 10 A</p>
Digital products	Fully compatible with Digital Starter Pack (with Notify+Assist Basic, Weekly Digest and myTOMRA), Notify+Assist Premium, Weekly Reports, Donation, Promotion, Couponing, Voucher Control and APIs & Integrations.

¹ Nominal figures for required system footprint (service area not included), configured as shown. Depth increases 1400 mm per additional cabinet for EasyPac.
² T9 BC model.
³ Approximate figures for 1x 1/1 Euro pallet with shakedown. Capacities will vary with object mix, type and system configuration. Module availability may vary across markets.
⁴ Weight limitation, approximate number.
⁵ Performance data may vary across markets, deposit regulations and system requirements.

Detailed products specifications and tailored installation drawings can be provided upon request.



Get in the Loop at tomra.com



LEGAL COMPLIANCE

This product is a configurable system of machine components. When assembled on installation site, tested and connected to the grid, the installation must be labelled and have the CE mark affixed. The CE marking is based on the following European Directives:
 2006/42/EU, Community Legislation on Machinery.
 2014/30/EU, Electromagnetic Compatibility (EMC).
 2011/65/EU, Restrictions of Hazardous Substance (RoHS).
 2012/19/EU, Waste Electrical and Electronic Equipment (WEEE).



TOMRA CERTIFICATION

TOMRA SYSTEMS ASA has implemented and maintains a Quality and Environmental Management System which fulfils Nemko's provisions for Management System Certification and the requirements of standards NS-EN ISO 9001:2015 and NS-EN ISO 14001:2015, with the scope described by the organization on 2018-05-29. The certification covers the development and delivery of automated systems for recycling.

We reserve the right to make changes to specifications without prior notice. While every effort has been made to ensure all information contained in this document is accurate, TOMRA assumes no liability for any errors, inaccuracies or omissions that may occur. All products and offers are subject to country availability. Please consider the environment before printing.

TOMRA T9 with EasyPac/ENG/02.2020