



# TOMRA T70 Single and Dual

Recycling has a place  
in any space



## Two ways to bring the benefits of a great recycling experience to your store

Help your customers recycle efficiently and easily with the T70, featuring TOMRA Flow recognition technology. Simple to install, speedy to use and designed for easy maintenance, choose the Single or Dual model to match your space and volume needs.



## Space is no barrier to making recycling work for your store

One square meter is all it takes to offer your customers a chance to recycle with you when you select the T70 Single. Or choose the T70 Dual to increase your storage capacity in less than twice the footprint.

## One machine can do it all

Keep everything streamlined for your customers and your store operations by accepting, compacting and storing used containers in one standalone machine. Choose to accept plastic bottles, cans or a mix with the T70 Single or Dual.



## Opciones de instalación flexibles para aprovechar al máximo su espacio

Configure su T70 simple o doble con acceso frontal o trasero, o incluso instálelo en la pared, para obtener una solución de diseño que funcione para sus clientes, su espacio y sus empleados.

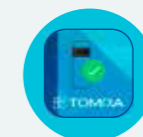


TOMRA T70 Single & Dual



## Las herramientas digitales amplían las capacidades de su máquina

Mejore las operaciones de la RVM sin problemas, obtenga el mejor tiempo de actividad y aumente la participación del cliente conectándose con las herramientas digitales de TOMRA.



Notify+Assist



myTOMRA



Voucher Control



Promotion



Weekly Reports



API Integration

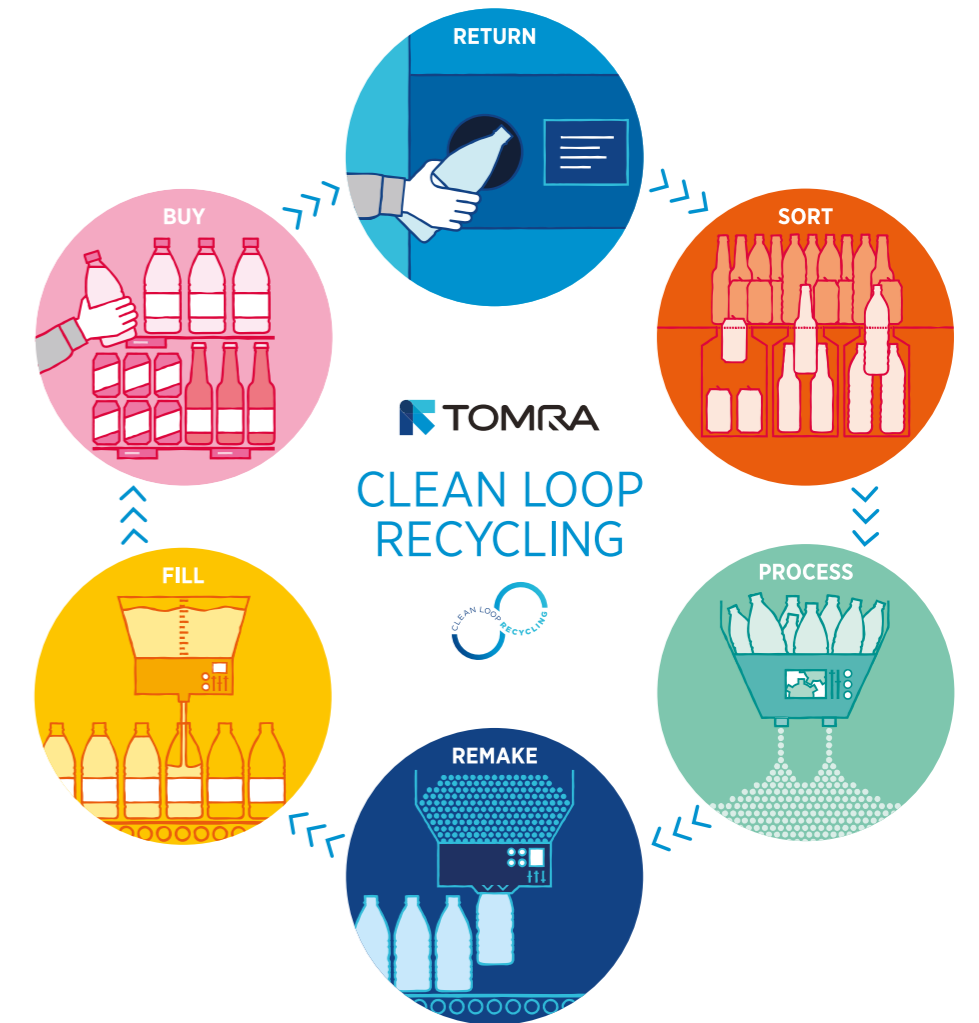
# LET'S PUT RECYCLING TO WORK FOR YOU

TOMRA's vision is Leading the Resource Revolution, helping to manage our planet's precious resources, today and tomorrow.

We believe that Clean Loop Recycling is the simple solution for keeping used beverage containers out of the waste stream, moving valuable materials from single use to multiple use.

As a retailer, you're at the heart of Clean Loop Recycling. You play a critical role at the point where consumers buy and return their containers.

Let's put recycling to work for you, and together we can maximize the positive impact for your customers, for your business, and for the planet.



When you partner with TOMRA, your business can experience real benefits:

A great recycling experience for your customers

Be prepared for your customers when they're ready to recycle with tailored solutions, industry-leading technology and powerful digital tools that make their experience efficient, easy and engaging.

Efficient operations for peace of mind

Keep your store running smoothly with a reverse vending system that's accurate, secure and efficient and service that's responsive and ready to get you back to recycling anytime you could use a hand.

A smart investment for long-term benefits

Choose a full-service partner with a global scale, extensive experience, high quality and continuous improvements that will keep your reverse vending system working hard for your business for years to come.



## TOMRA T70 Single and Dual

	Single	Dual
<b>Dimensions</b>	810 mm x 1041 mm x 1690 mm [W x D x H]	1293 mm x 1041 mm x 1800 mm [W x D x H]
<b>Footprint</b>	0.84 m <sup>2</sup>	1.4 m <sup>2</sup>
<b>Accepted containers</b>	Cans, plastic bottles and non-refillable glass bottles	Cans, plastic bottles and non-refillable glass bottles
<b>Storage capacity per cabinet <sup>1</sup></b>	<b>PET bottles:</b> Up to 1100 (compacted) <sup>1</sup> <b>Cans:</b> Up to 3200 (compacted) <sup>1</sup> <b>Glass bottles:</b> Up to 300	<b>PET bottles:</b> Up to 1500 (compacted) <sup>2</sup> <b>Cans:</b> Up to 6000 (compacted) <sup>2</sup> <b>Glass bottles:</b> Up to 300
<b>Configurations</b>	Free-standing, front or rear unload. Also available in wall-mounted version.	Free-standing, front or rear unload. Also available in wall-mounted version. SoftDrop bin for refillable glass bottles.
<b>Recognition technology</b>	TOMRA Flow	
<b>Speed capability</b>	Up to 45 containers per minute <sup>3</sup>	
<b>Electrical – Mains EU</b>	400 V, 3-phase w/ground, 50Hz, 16 A 230V, 1-phase w/ground, 50Hz, 13 A	
<b>Digital products</b>	Fully compatible with Digital Starter Pack (with Notify+Assist Basic, Weekly Digest and myTOMRA), Notify+Assist Premium, Weekly Reports, Donation, Promotion, Couponing, Voucher Control and API's & Integrations.	

<sup>1</sup> Approximate figures for 1x bag cart with shakedown. Capacities will vary with object mix, type and system configuration.  
<sup>2</sup> Approximate figures for 1x 1/1 Euro pallet with shakedown. Capacities will vary with object mix, type and system configuration.  
<sup>3</sup> Performance data may vary across markets, deposit regulations and system requirements

Detailed products specifications and tailored installation drawings can be provided upon request.



Get in the Loop at [tomra.com](https://tomra.com)



### LEGAL COMPLIANCE

The CE mark on this product confirms compliance with the following European Directives:  
 2006/42/EU, Community Legislation on Machinery.  
 2014/30/EU, Electromagnetic Compatibility (EMC).  
 2011/65/EU, Restrictions of Hazardous Substance (RoHS).  
 2012/19/EU, Waste Electrical and Electronic Equipment (WEEE).



### TOMRA CERTIFICATION

TOMRA SYSTEMS ASA has implemented and maintains a Quality and Environmental Management System which fulfils Nemko's provisions for Management System Certification and the requirements of standards NS-EN ISO 9001:2015 and NS-EN ISO 14001:2015, with the scope described by the organization on 2018-05-29. The certification covers the development and delivery of automated systems for recycling.

We reserve the right to make changes to specifications without prior notice. While every effort has been made to ensure all information contained in this document is accurate, TOMRA assumes no liability for any errors, inaccuracies or omissions that may occur. All products and offers are subject to country availability. Please consider the environment before printing.