

# H-10/H-11

## ALL IN ONE

The H-10 and H-11 reverse vending machines offer a clean and robust design, ideal for receiving used beverage containers.

Both H-10 and H-11 feature a touch screen with a large 21.5" display suited for branding and promotional activities.

H-11 is equipped with a SoftDrop™ safe-landing unit to receive glass bottles.

- + Collection of cans / plastic / glass
- + Double bin for storage
- + Optical fraud protection
- + Electronic door lock

ENGAGING  
MODERN  
INTELLIGENT



### DURABLE AND ROBUST

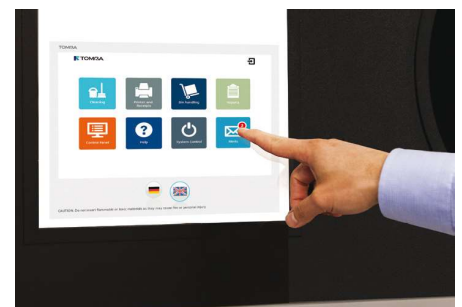
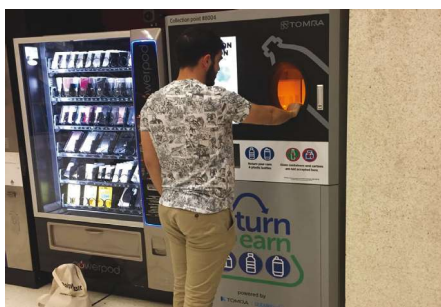
- Reinforced and durable steel doors.
- Ideal for sheltered outdoor / parking area installation.

### FLAT CABINET

- Ideal for custom wrapping and advertising.
- Customizable to fit your brand profile.
- Ideal for tight spaces.

### TOUCH EDITION

- Self-explanatory guidance for customers on the display
- Intuitive guidance for store personnel



# H-10/H-11

Dimensions		Storage capacity																
		<p><b>UPPER STORAGE</b></p> <p>Cans: 380 Cans (0,33L)</p> <p>PET: 240 Bottles (0,5L)</p> <p>PET: 90 Bottles (1,5L)</p> <p><b>LOWER STORAGE</b></p> <table border="1"> <thead> <tr> <th></th> <th>BAG RACK</th> <th>SOFTDROP™</th> </tr> </thead> <tbody> <tr> <td>Cans:</td> <td>520 Cans (0,33L)</td> <td>400 Cans (0,33L)</td> </tr> <tr> <td>PET:</td> <td>350 Bottles (0,5L)</td> <td>250 Bottles (0,5L)</td> </tr> <tr> <td>PET:</td> <td>150 Bottles (1,5L)</td> <td>110 Bottles (1,5L)</td> </tr> <tr> <td>Glass:</td> <td>N/A</td> <td>170 Bottles (0,6L)</td> </tr> </tbody> </table> <p>Based on bin size: W: 600 x D: 800 x H: 850 mm</p>			BAG RACK	SOFTDROP™	Cans:	520 Cans (0,33L)	400 Cans (0,33L)	PET:	350 Bottles (0,5L)	250 Bottles (0,5L)	PET:	150 Bottles (1,5L)	110 Bottles (1,5L)	Glass:	N/A	170 Bottles (0,6L)
	BAG RACK	SOFTDROP™																
Cans:	520 Cans (0,33L)	400 Cans (0,33L)																
PET:	350 Bottles (0,5L)	250 Bottles (0,5L)																
PET:	150 Bottles (1,5L)	110 Bottles (1,5L)																
Glass:	N/A	170 Bottles (0,6L)																
<p>Weight: 270 kg Footprint: 0.81m<sup>2</sup></p>																		

Container specifications	Speed capability	Environmental	Electrical	Connectivity
<p>Material types: PET and cans (no compaction)</p> <p>Glass bottles can be accepted with the SoftDrop™</p> <p>Container size: Diameter 50-115 mm Height 80-380 mm</p>	<p>Shape &amp; barcode reading</p> <p>Up to 15 containers per minute</p>	<p>Humidity: Maximum 90% relative humidity, non-condensing</p> <p>Temperature: 0°C to +40°C (32°F-104°F)</p> <p>The machine has been designed for indoor use only</p>	<p>Power consumption: H-10: Idle 50W, max. (approx.) 70W H-11: Idle 50W, max. (approx.) 300W</p> <p>Mains: 100-240 V, AC 1-phase w/ground, 50/60 Hz, min 10A.</p>	<p>LAN (Ethernet TCP/IP)</p>

Configurations	Recognition	User interaction	Colors
<p>SoftDrop™ or Bag Rack</p> <p>Front unload</p>	<p>Shape recognition</p> <p>Barcode recognition</p> <p>Full container detection</p>	<p>21.5" touch display</p> <p>Resolution: WSUVGA + ( WSUGA / HDTV ) 1920(H) x 1080 (V)</p> <p>Support color: 16.7M (RGB 8-bits)</p> <p>User guidance in display</p>	<p>Standard color: Black + light grey steel</p>

*We reserve the right to make changes to specifications without prior notice. While every effort has been made to ensure all information contained in this document is accurate, TOMRA and/or SOCSE L.A. assumes no liability for any errors, inaccuracies or omissions that may occur. All products and offers are subject to country availability.*

## LEADING THE RESOURCE REVOLUTION

35 billion used beverage containers are captured every year by TOMRA's reverse vending machines. TOMRA's total avoided greenhouse gas emission equals the annual emissions from 2 million cars -each driving 10.000 kilometers.